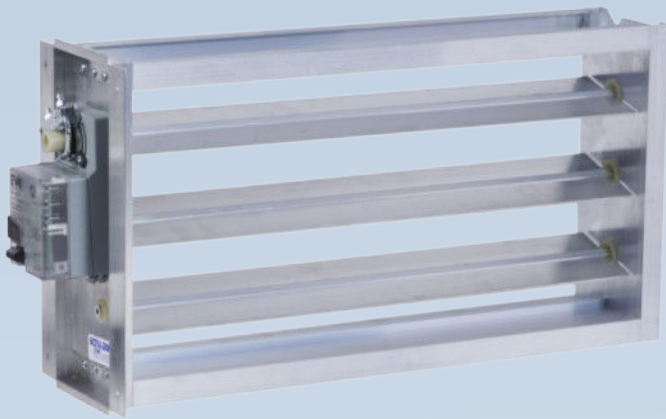


ULTRA-ZONE[®]

Zone Control System

Zone Dampers

The Clear Leader in Zoning!



Excellence Without Compromise

EWC[®]
CONTROLS INC.

EWC Controls HVAC established in 1988.

Proudly Manufactured in the USA

ULTRA-ZONE[®]

Zone Control System

Zone Dampers

URD



- Nylon Blade shaft notched to indicate blade position
- Male crimped end to ease installation process
- More forgiving door allows minor out-of-round dampers to operate smoothly
- Open and Closed LED's indicate blade position
- Nylon shaft provides thermal barrier to eliminate condensation
- Integrated door seal provides 97% shut off up to 1" W.C.
- Integrated seal eliminates loose gasket material
- Min./Max open and close adjustable set points

MOTOR SPECS

18 in. lbs. torque / 4x stronger than any other zone damper

1.5 VA Draw

C/UL Listed

24Volt, class 2 NEMA Certified

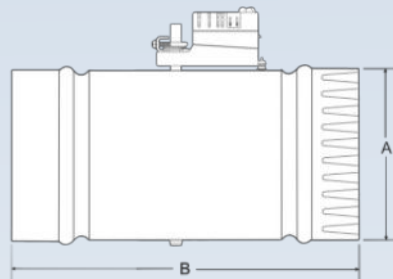
"Halomo" brushless ECM motor

40 seconds open/close

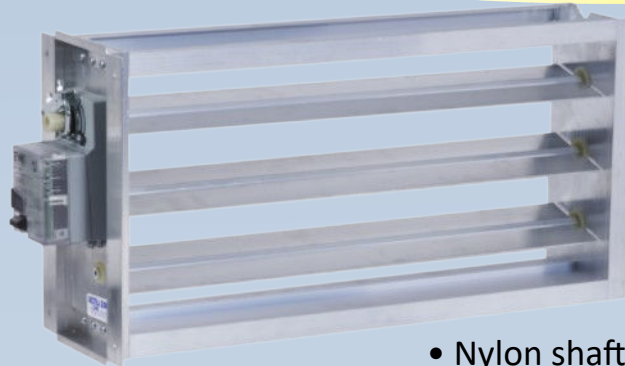
Optional end switch for additional interface

NOMINAL DIMENSIONS

MODEL #	A	B
URD - 4	4.00"	10.00"
URD - 5	5.00"	10.00"
URD - 6	6.00"	12.00"
URD - 7	7.00"	12.00"
URD - 8	8.00"	12.00"
URD - 9	9.00"	12.00"
URD - 10	10.00"	12.00"
URD - 12	12.00"	14.00"
URD - 14	14.00"	16.00"
URD - 16	16.00"	20.00"
URD - 18	20.00"	22.00"
URD - 20	22.00"	24.00"



ND



- Nylon Blade shaft notched to indicate blade position
- Heavy gauge extruded aluminum frame
- Nylon blade bushings allow for smooth, quiet operation
- Open and Closed LED's indicate blade position

Motor Specs

18 in. lbs. torque / 4x stronger than any other zone damper

1.5 VA Draw

C/UL Listed

24Volt, class 2 NEMA

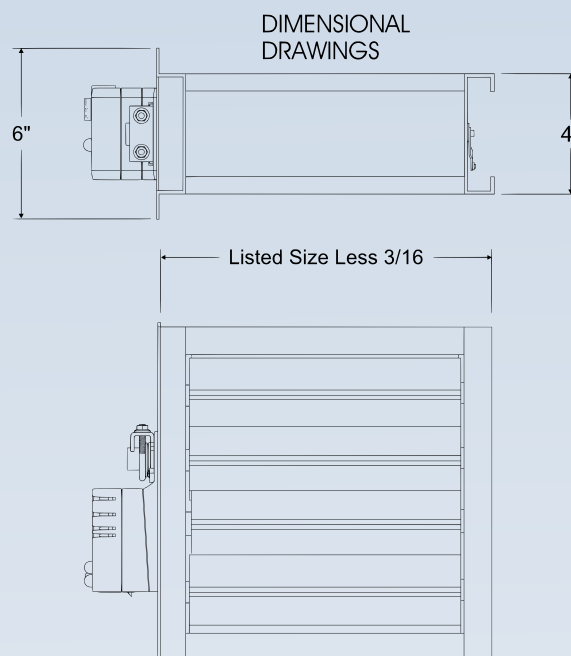
Certified

“Halomo” brushless ECM motor

40 seconds open/close

Optional end switch for additional interface

- Nylon shaft provides thermal barrier to eliminate condensation
- Overlapping blades provides 97% shut off up to 1” W.C.
- Custom and Odd size are available
- Min./Max open and close adjustable set points



SID



The Most Complete and Easy to Install Zone Damper for Retrofit Applications

The SID (Slip-In-Damper) is the most user friendly retrofit damper available. The 1.5VA actuator allows up to 20 SID's on one EWC Controls zone panel with a 40VA transformer. EWC Controls also offers more sizes than any other competitor. With a single cut the SID can be installed in seconds. The optional SIA end switch allows for increased flexibility.

MOTOR SPECS

18 in. lbs. torque / 4x stronger than any other zone damper

1.5 VA Draw

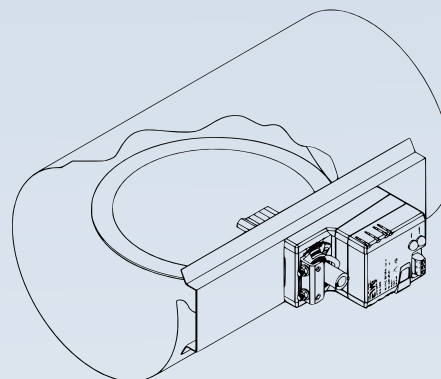
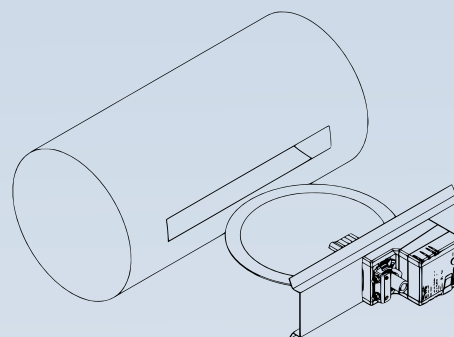
C/UL Listed

24Volt, class 2 NEMA Certified

“Halomo” brushless ECM motor

40 seconds open/close

Optional end switch for additional interface



ULTRA-ZONE[®]

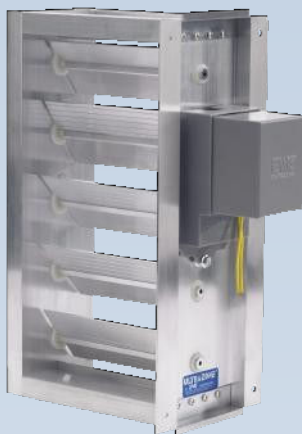
Zone Control System

Spring Dampers



MODEL RSD

24 Volt spring return motor. The damper is field reversible from power closed/spring open to power open/spring closed. The motor possesses 4 in. lbs. torque, is a two wire hook up, and there is an integrated seal on the blade.



MODEL ND-RSD

24 Volt spring return motor. The motor is not field reversible. The motor possesses 4 in. lbs. of torque, is a two wire hook-up and is always mounted on the second dimension specified. When ordering must specify "spring closed" or "spring open".



MODEL URD-SRE120

120 Volt spring return motor. This cannot be used with an ULTRA-ZONE zoning system.

Excellence Without Compromise[®]
EWC
CONTROLS INC.

Engineering assistance is only a phone call away.

ULTRA-ZONE[™]
COMFORT CONTROL SYSTEMS

385 Highway 33
Englishtown, NJ 07726
Phone: 800-446-3110
Fax: 732-446-5362
www.ewccontrols.com



ClimateTalk[™]
SPOKEN HERE



© copyright 2022